



## **Sertyfied Hair** **Custom Wig Measurement Form**

Before you begin please ensure your hair is pinned, braided or flattened as firm as possible before taking the measurements. This will eliminate bulges that will distort head contours and give inaccurate measurements. Below are instructions on how to measure your head size for custom and premade Sertyfied wigs.

1. The circumference of the head.

Measure all around the head. Position the tape measure so that the edge follows the entire hairline of the head.





2. Forehead to nape.

Measure from the hairline at the center of the forehead straight back down and over the crown to the nape of the neck





3. Ear to ear across the hairline.

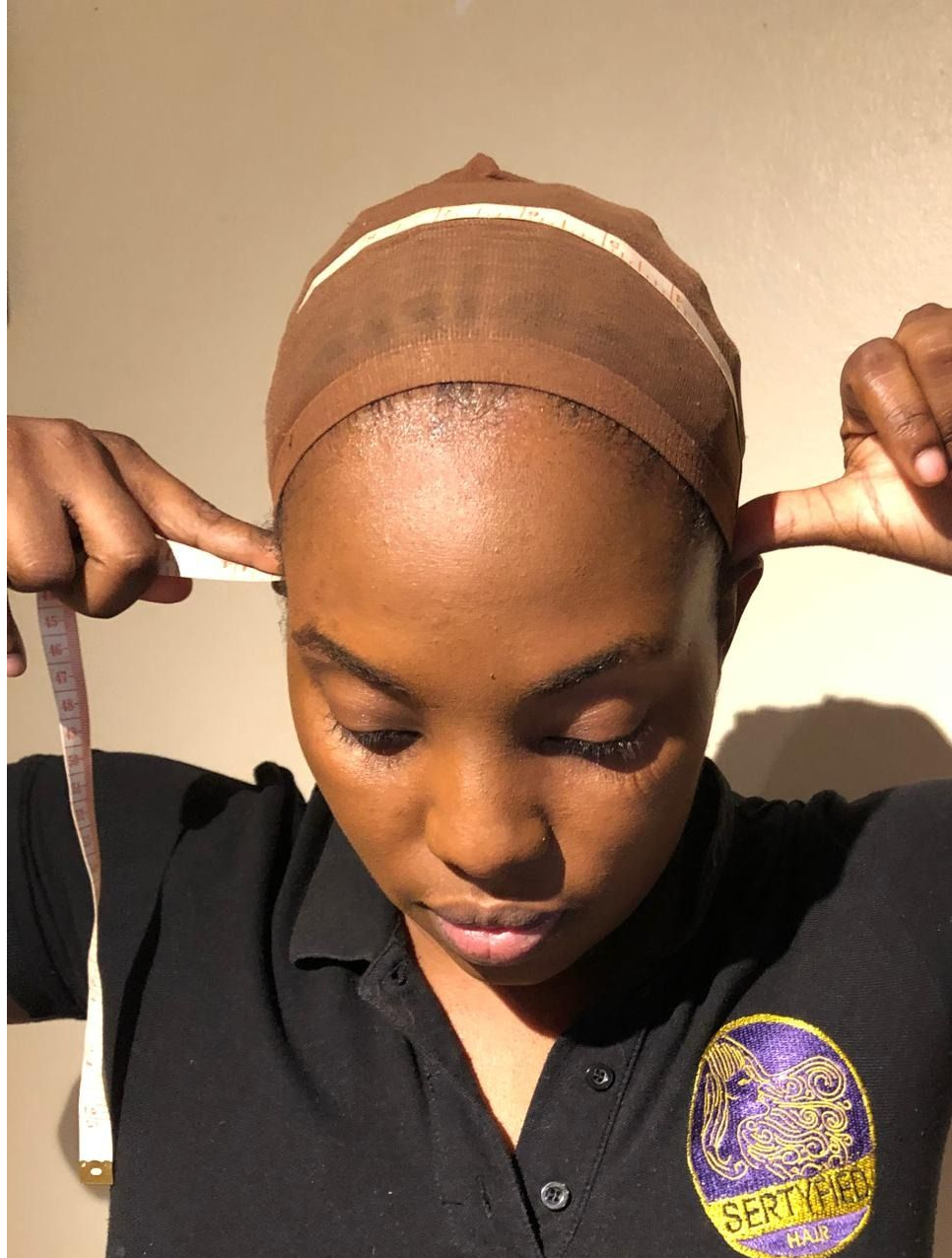
At the front of the ear, measure from the hairline at the base of sideburns, up and along the hairline, forehead to the same point on the other side of the ear.





4. Ear to ear over top of the head.

Measure from the hairline directly above the ear, across the top of the head to the hairline above the other ear.





5. Temple to temple.

From the temple of the left hairline, across the back of head to the temple on the right hairline side.





6. Nape Of neck

Measure the width of the hairline across the nape of the neck.



7. Please indicate if you would like a part on your wig or not.



## Sertyfied Hair Pre-Made Measurement Chart

### Small Cap:

- Circumference 21 - 21.5"
- Front to Nape 13 – 13.5"
- Ear to Ear Across Forehead 11"

### Medium Cap:

- Circumference 22 - 22.5"
- Front to Nape 14 – 14.5"
- Ear to Ear Across Forehead 12 – 12.5"

### Large Cap:

- Circumference 23 - 23.5"
- Front to Nape 15 – 15.5"
- Ear to Ear Across Forehead 11.5 – 12"